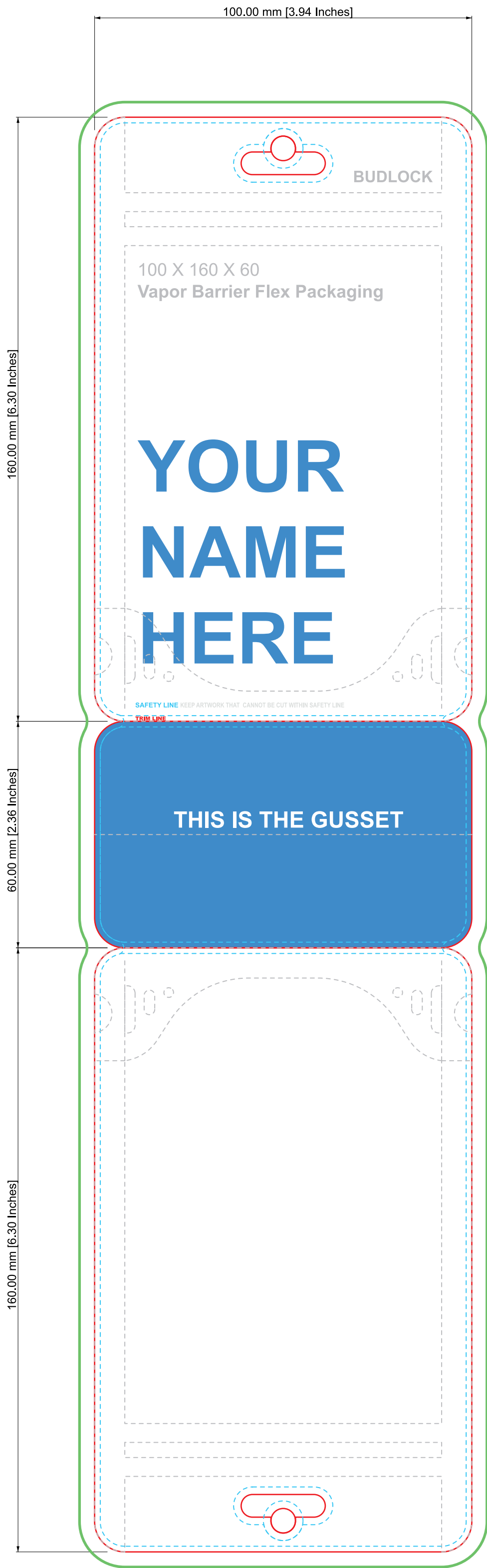


# Stand Up Pouch Vapor Barrier Flex Packaging

W: 100 mm [3.94 Inches] x H: 160 mm [6.30 Inches] x Gusset: 60 mm [2.36 Inches]



## BLEED LINE

Background artwork and other graphics that you want to meet the edge of the label should go beyond the cut line and extend to the **green** bleed line.

## TRIM LINE

The **red** line is the actual trim line used by the cutting machine to cut out the final shape and size of the label.

## SAFETY LINE

KEEP important text and graphics safe! **DO NOT** place anything important beyond the **blue dotted** line to prevent trimming.

## Heat Pressed Areas

All graphics are okay within the **heat pressed areas** , but a fine texture will be left from heat pressing the layers of your bag together. \*\* Actual heat pressed area may vary

THE RESPONSIBILITY TO DETERMINE PROPER FITMENT OF BAGS IS WITH THE BUYER OF SUCH GOODS OR SERVICES. MAKERBAUS DOES NOT GUARANTEE FITMENT OF ANY BAGS PRINTED BY THIRD-PARTIES OR FITMENT OF BAGS USED WITH PRODUCTS NOT SOLD BY MAKERBAUS.COM

<div>PRICING</div> <div></div>	<div><div><div>MB</div><div>makerbaus</div></div></div>		<div>METRIC</div> <div>DIMENSIONS ARE IN MILLIMETERS TOLERANCES</div>	<div>CLIENT</div> <div>PRODUCT</div> <div>Standup Pouch Vapor Barrier Flex Packaging</div> <div>W: 100 mm [3.94 Inches] x H: 160 mm [6.30 Inches] x Gusset: 60 mm [2.36 Inches]</div>	<div>DESIGNER</div> <div>DATE</div>	<div>NOTES</div> <div>NUMBER OF PLATES</div>
	<div>SIZE</div> <div>A2</div>	<div>SCALE</div> <div>NONE</div>				